

ST MARTIN'S PLAY AREA – PATH REMEDIATION

Introduction

The Committee previously reviewed path remediation in Stone Meadow (Phase 3) Country Park and sections of St Martin's Park in early 2022 as part of its programme of remediation, Minute A/22/06 refers. The sections that were replaced spring 2022 have so far been resilient to pedestrian traffic and inclement weather.

Further sections of the play park, not subject to the previous remediation are brought forward for consideration in the light of poor drainage and increased wear and tear.

St Martin's Play Area

The path is a hoggin material, which has poor drainage (leading to pooling of water) and is easily eroded by fast flowing water. The steeper sections of the path are prone to water run off, making it not only unsightly, but potentially unsafe for users particularly those with pushchairs, wheelchairs and bicycles. The worse affected area is just inside the pedestrian access gate (located between the primary school entrance and the carpark).

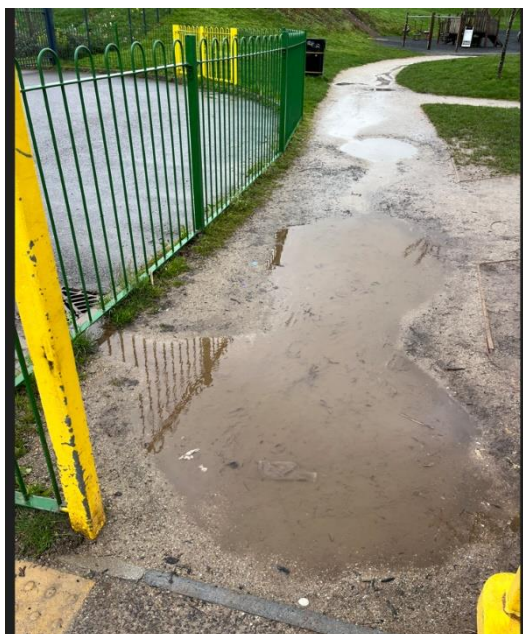


Fig 1



Fig. 2

Figure 1 shows the area inside the entrance gate. Figure 2 shows the extent of the path through the play area.

Options

The possible options for the remediation of this path are as follows:

1. Continue maintaining the path with the original hoggin material as part of the maintenance programme. This, however, does not resolve the issue of the path continuously being washed away or allowing pools of water to gather.
2. Replace a section of pathway estimated to be 9m from the gated entrance into the play area, as shown in Fig 1. The path to be repaired and replaced with a camber path to improve drainage away from the path. The anticipated costs are £2,520.00 plus VAT across the 9m stretch. Annex 1 provides details of the quotation for the works.
3. Replace the entire pathway, through the centre of the play area as shown in Fig.2 at an anticipated cost of £8,674.00 plus VAT an area of just over 70m. Annex 2 provides details of the quotation for the works.

Recommendation

In noting the cost of the proposed works, to recommend to Council to accept the quotation for £8,674.00 plus VAT and to instruct the Council's Landscaping and Grounds Maintenance Contractor to carry out works to replace the entire pathway, through the centre of the play area. The works to be scheduled outside of school holidays to reduce the impact of the temporary loss of amenity.